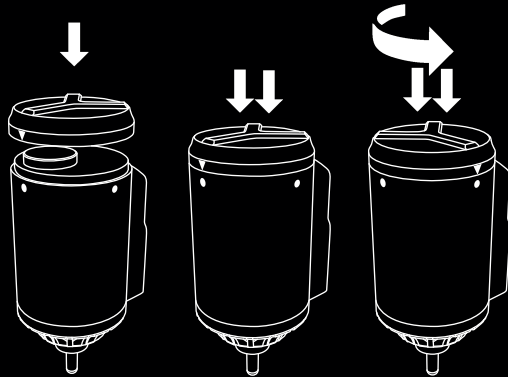


## PERFORMANCE AND TECHNICAL

- POWER LEVEL IS ALWAYS MAINTAINED AT ANY BATTERY PERCENTAGE. IF THERE IS NOT ENOUGH POWER AVAILABLE FROM THE BATTERY THE ROVER R-1 WILL STOP AND INFORM.
- START UP SEQUENCE: TAILORED TO IMPROVE PERFORMANCE IN BRUSHLESS MOTORS
- NITRO: SHORT PULSE AUTOMATICALLY ADDED TO EVERY START UP TO ENSURE A RELIABLE OPERATION.
- HEALTH MONITORING: MORE THAN 1,000 CHECKS PER SECOND TO ENSURE SAFE OPERATION ON THE MACHINE.

## REPLACING THE BATTERY



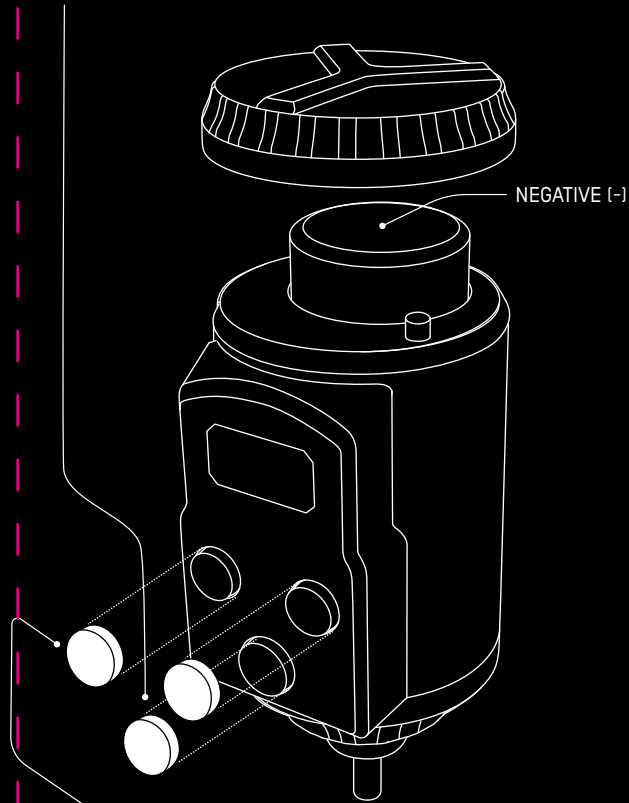
1. ALIGN MARKS

2. PUSH

3. PUSH & TURN

## ON/OFF

TURN ON/OFF BY HOLDING THE BUTTON FOR 3 SECONDS. START/STOP THE OUTPUT BY CLICKING ONCE.

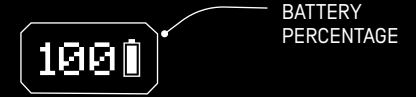


## ADJUST

ADJUST THE VOLTAGE IN 0.1V STEPS. FAST UP/DOWN BY HOLDING THE BUTTON ^v

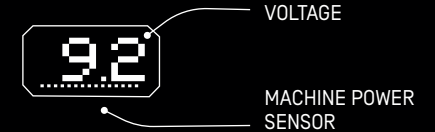
## BATTERY READOUT

TO VIEW THE BATTERY READOUT, PRESS AND HOLD THE CENTRAL BUTTON FOR 1 SECOND.



## MACHINE POWER SENSOR

- THE POWER BAR INDICATES HOW MUCH POWER YOUR MACHINE IS CURRENTLY DEMANDING IN REAL-TIME.



- PRO TIP: MACHINE POWER SENSOR CAN BE USED TO ESTIMATE BATTERY AUTONOMY (\*).
- EXPECT BATTERY DURATION FROM 2H UP TO A MAXIMUM OF 7H WITH EACH SINGLE LI-ION BATTERY.

## CHARGING THE BATTERY

- CHARGE THE BATTERIES WITH THE USB COMPATIBLE CHARGER
- RESPECT POLARITY WHEN CHARGING (SEE LED INDICATOR)
- REMOVE THE BATTERY WHEN THE INDICATOR DISPLAYS END OF CHARGE
- USE ONLY COMPATIBLE ROUND 18350 LI-ION BATTERIES (FLAT)

## IMPORTANT !

---



DO NOT LEAVE THE REPLACEABLE BATTERY INSIDE THE ROVER R-1 WHEN NOT IN USE FOR A LONG TIME.

DO NOT SHORT CIRCUIT THE CONTACTS OF THE CONNECTOR.

HANDLE WITH CARE.

DO NOT DROP OR PIERCE.

DO NOT SOAK OR SPRAY WITH ANY LIQUID. USE A TOWEL IMPREGNATED WITH DISINFECTANT TO CLEAN.

KEEP THE BATTERIES AT ROOM TEMPERATURE AND DON'T USE THEM IF YOU NOTICE OVERHEATING, LEAKS, ODORS, OR CHANGE IN SHAPE.

STORE BATTERIES AWAY FROM DIRECT SUNSHINE AND ANYTHING THAT CAN CATCH FIRE.

WHEN THE BATTERIES ARE WORN OUT, TAKE THEM OUT TO A RECYCLING LOCATION FOR DISPOSAL. DO NOT OPEN OR DISMANTLE.

ALWAYS CARRY THE SPARE BATTERIES IN A PLASTIC BOX.

DON'T LEAVE YOUR BATTERIES CHARGING UNATTENDED.

DON'T OVER-DRAIN YOUR BATTERIES.

NEVER REMOVE THE BATTERY WRAPPER.

NEVER USE OR CHARGE AN EXTREMELY HOT OR COLD BATTERY.

---

DO NOT FORCE BATTERIES IF THEY DON'T COMFORTABLY FIT.

ALWAYS USE BATTERIES FROM TRUSTED AND RELIABLE BRANDS AND RETAILERS.

DO NOT BRAG ABOUT YOUR NEW MUSOTOKU BATTERY PACK TO YOUR STUDIO-MATES, THERE IS NO NEED, THEY WILL ASK YOU ABOUT IT ANYWAY.

## TECHNICAL SPECIFICATIONS

---

- Output 5V-12V
- Adjustable in 0.1V steps
- From 2h up to a maximum of 7h
- Battery percentage readout
- Power-meter display indicator
- Smart power protections
- Smooth and clean voltage. No fluctuations.
- 1.18W x 2.7H in - 30W x 69H mm
- 2.5 oz - 72 gr (battery included)
- 1835 Flat Li-ion battery



# ROVER R-1

[BATTERY] POWER SUPPLY